



SecuX VMS Introduction

SmartcityKorea Inc.



01

SecuX VMS

SecuX VMS Main Features

Next Generation VMS SecuX Based on Web Broker

Responsible for security with flexible openness and strong 3rd integrated



CCTV Camera

Multi-Vander camera / Infinitive camera connection



Fail-Over Service Support

Master fail-over / Archiving Server fail-over service supporting



Multi OS Support

Linux Server & Client / Window Server & Client / Linux & Window Mixing



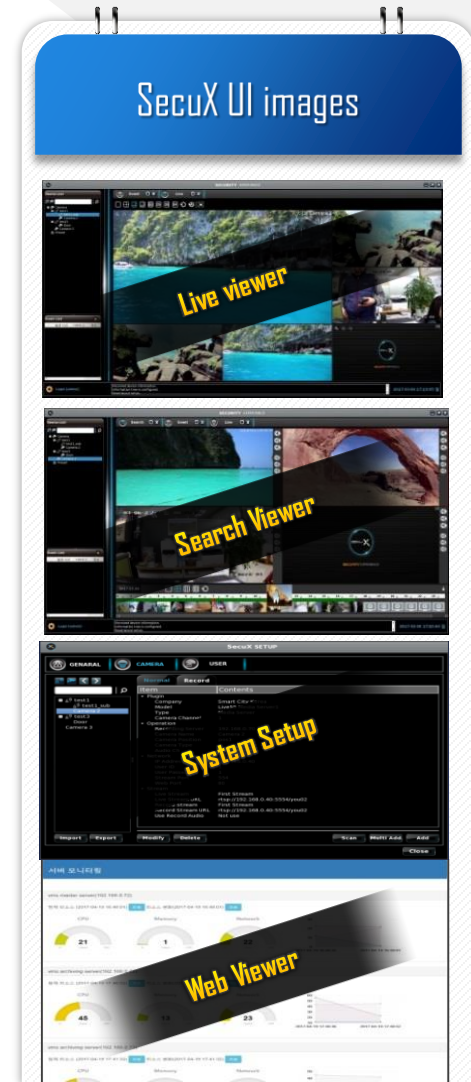
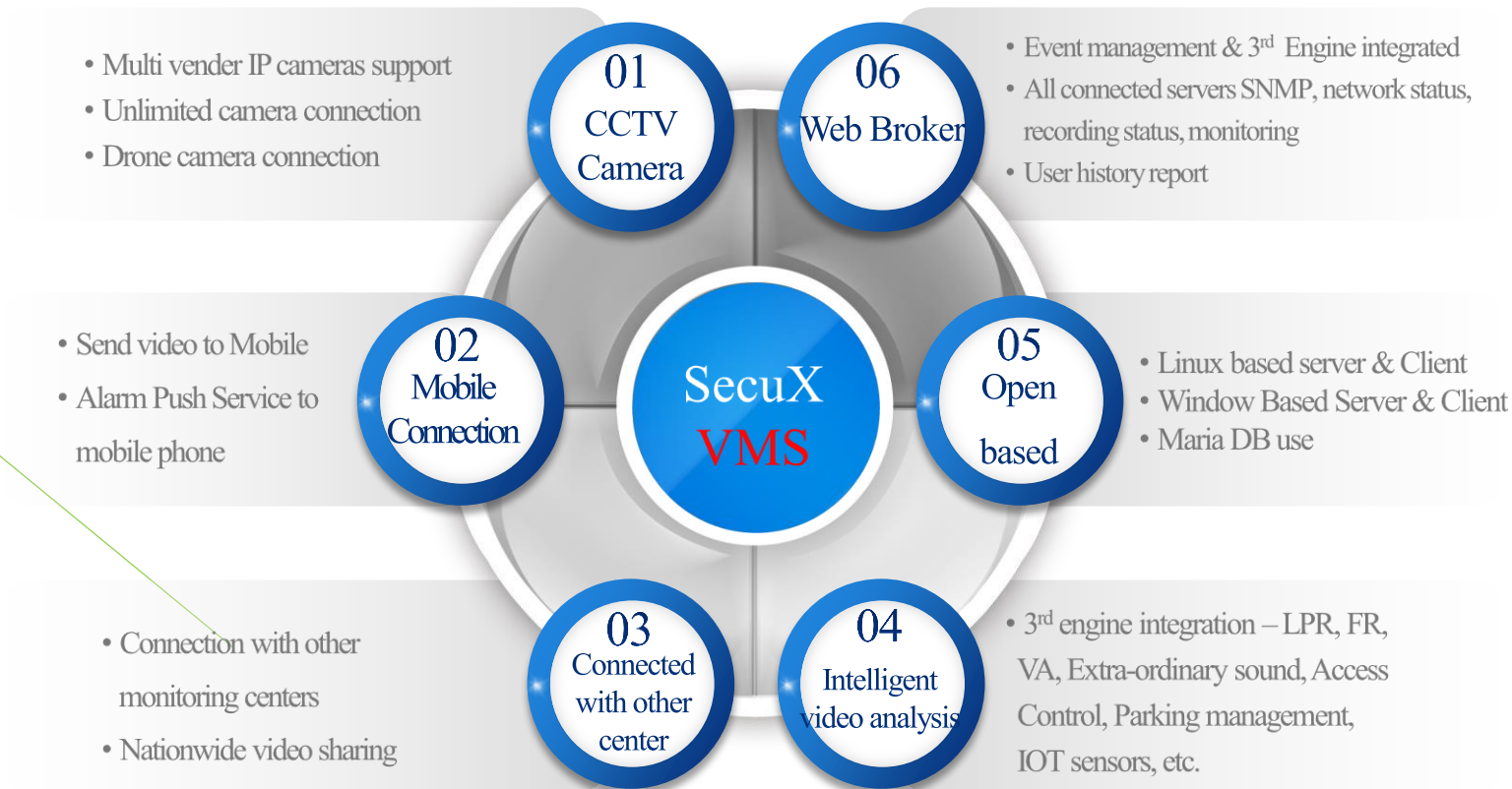
Web Management Viewer

Server setup & Status on the Web / Archiving status Monitoring on the Web



1. Multi floating window support – Using search viewer with Live viewer at same time
2. Multi partial zoom for live video with multi new live windows
3. Various events management and integration handle
4. Quick search with Thumbnail image
5. Live video windows on the E-Map
6. Powerful user log history searching list support
7. Effective integrated with VCA, People counting, FR, LPR, etc. 3rd engine servers

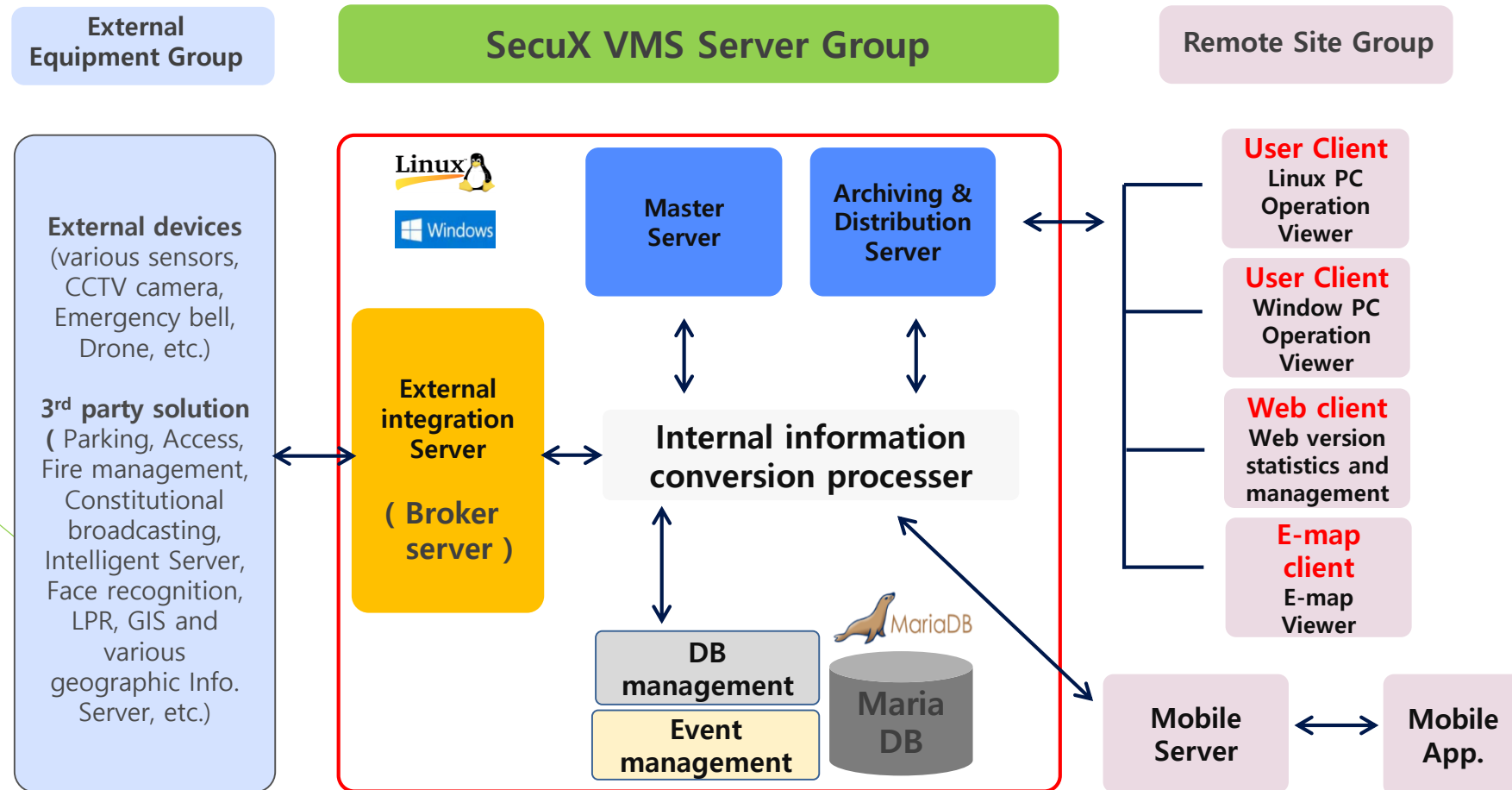
SecuX VMS Main Merits



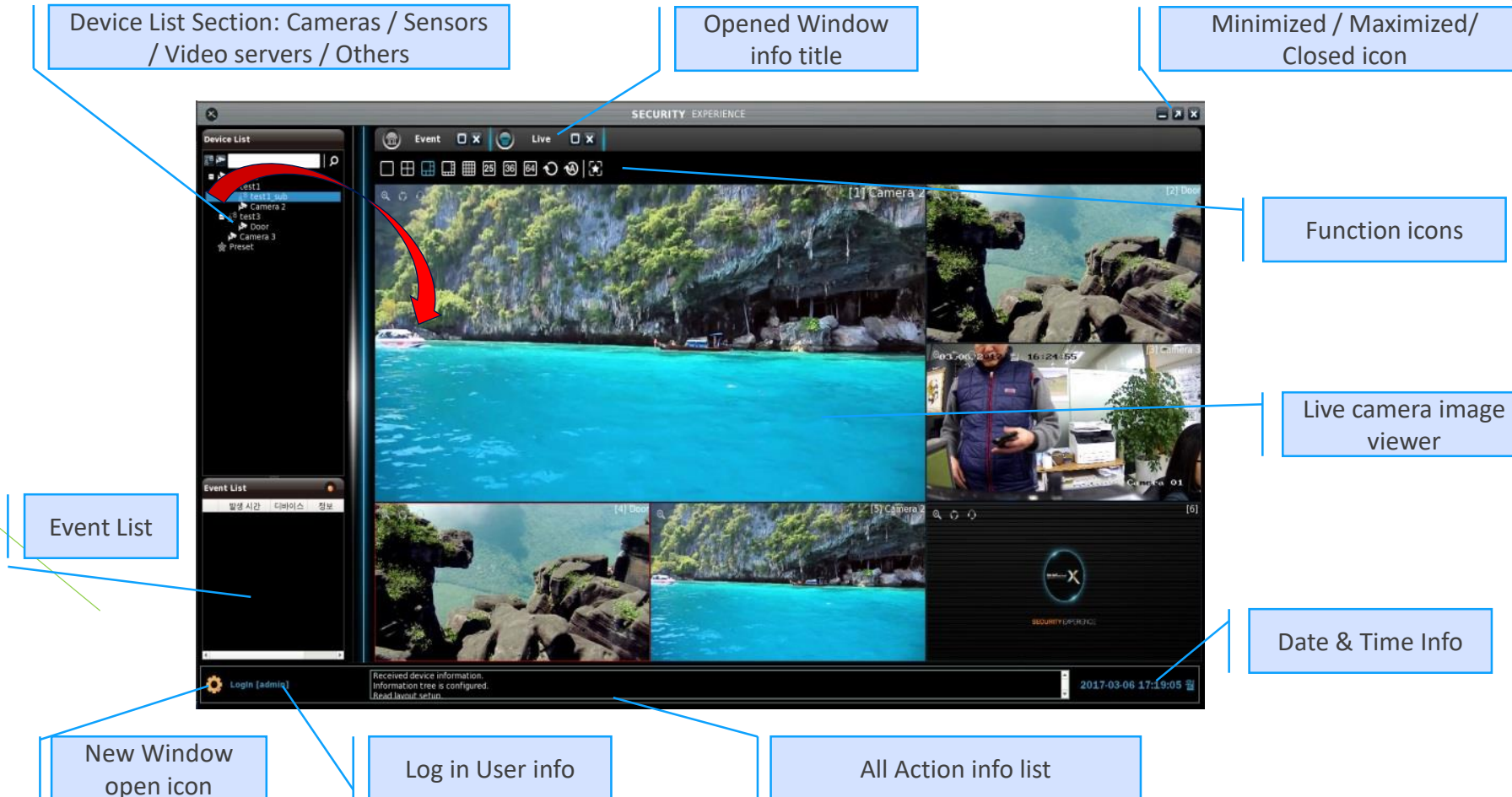
SecuX VMS Component Server Modules

Component Module	Function details
Operating management server (Master Server)	User information, Camera Information, Server cluster configuration
Archiving & Distribution Server	Video Archive, Video distribution
Integrated Link server (Web based BROKER Server)	Event handling, Server Setup, Recording status monitoring
	Heterogeneous solution (3 rd Engines) interworking (GIS, Parking Management, Access control, Power Management, Fire situation receiver, PA, Broadcasting transmission, etc.)
Viewer Server (Client Server)	Live Video monitoring, Searching stored video, back-up, event pop-up, PTZ control, various control and setting.
E-map Server	Image map viewer, Multi-map support, Live camera monitoring, Events popup and list, IOT Sensor integrated, Map Generator support, etc.
Mobile Service Server & App.	Transcoding server to Mobile phone, Live video monitoring, Playback search, event alarm push, PTZ control, etc.

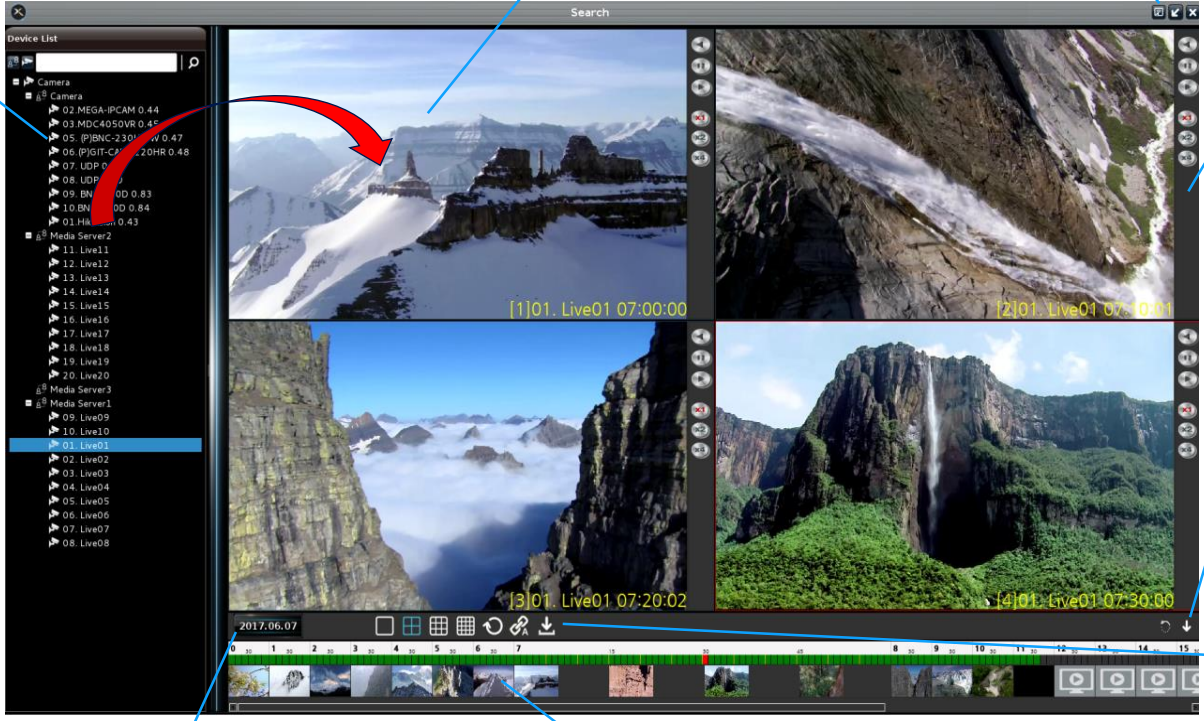
SecuX VMS Basic Data Flow Diagram



SecuX VMS Client Viewer - Main Functions



SecuX VMS Client Viewer - Search Functions



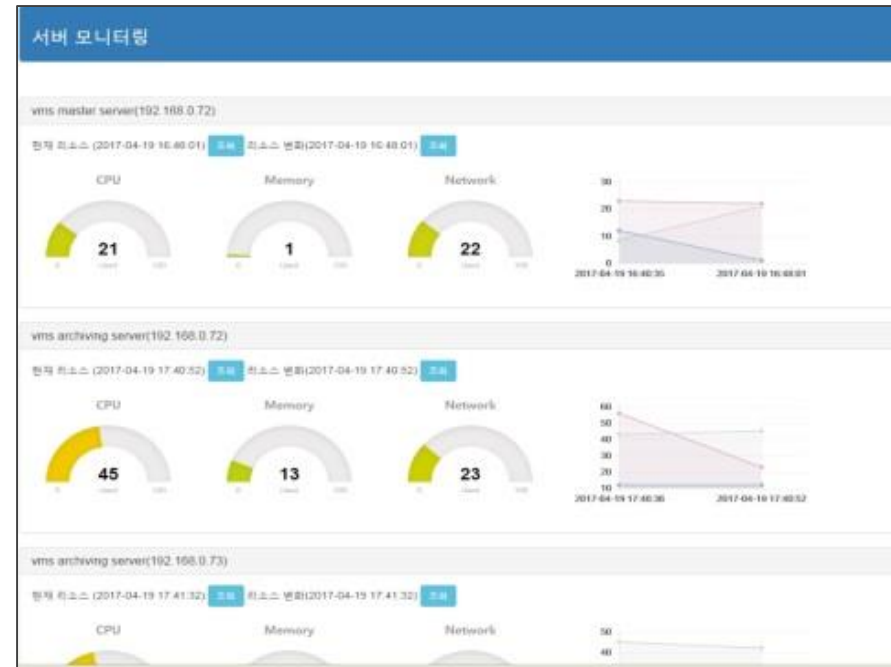
The screenshot shows the SecuX VMS Client Viewer interface. On the left is a 'Device List' section with a tree view of cameras and media servers. The main area displays four video feeds in a 2x2 grid. At the bottom is a timeline with a calendar and a row of thumbnail images. Callouts point to various features:

- Device List Section; Cameras / Sensors / Video servers / Others**: Points to the left sidebar.
- Opened camera for playback**: Points to the top-left video feed.
- Minimized / Maximized / Closed icon**: Points to the window control icons in the top-right corner.
- Function icons for playback (Revise playback / Stop / Play / 2 times / 4 times)**: Points to the playback control icons on the right side of the video feeds.
- Hide Thumb nail / reload**: Points to the thumbnail icons on the right side of the video feeds.
- Function icons (Screen division / Nest page / Link control / Backup)**: Points to the bottom-right corner of the interface.
- Calendar**: Points to the calendar icon at the bottom left.
- Thumb nail images for quick search**: Points to the row of thumbnail images at the bottom.

SecuX VMS Client Viewer – Setup / Web monitoring



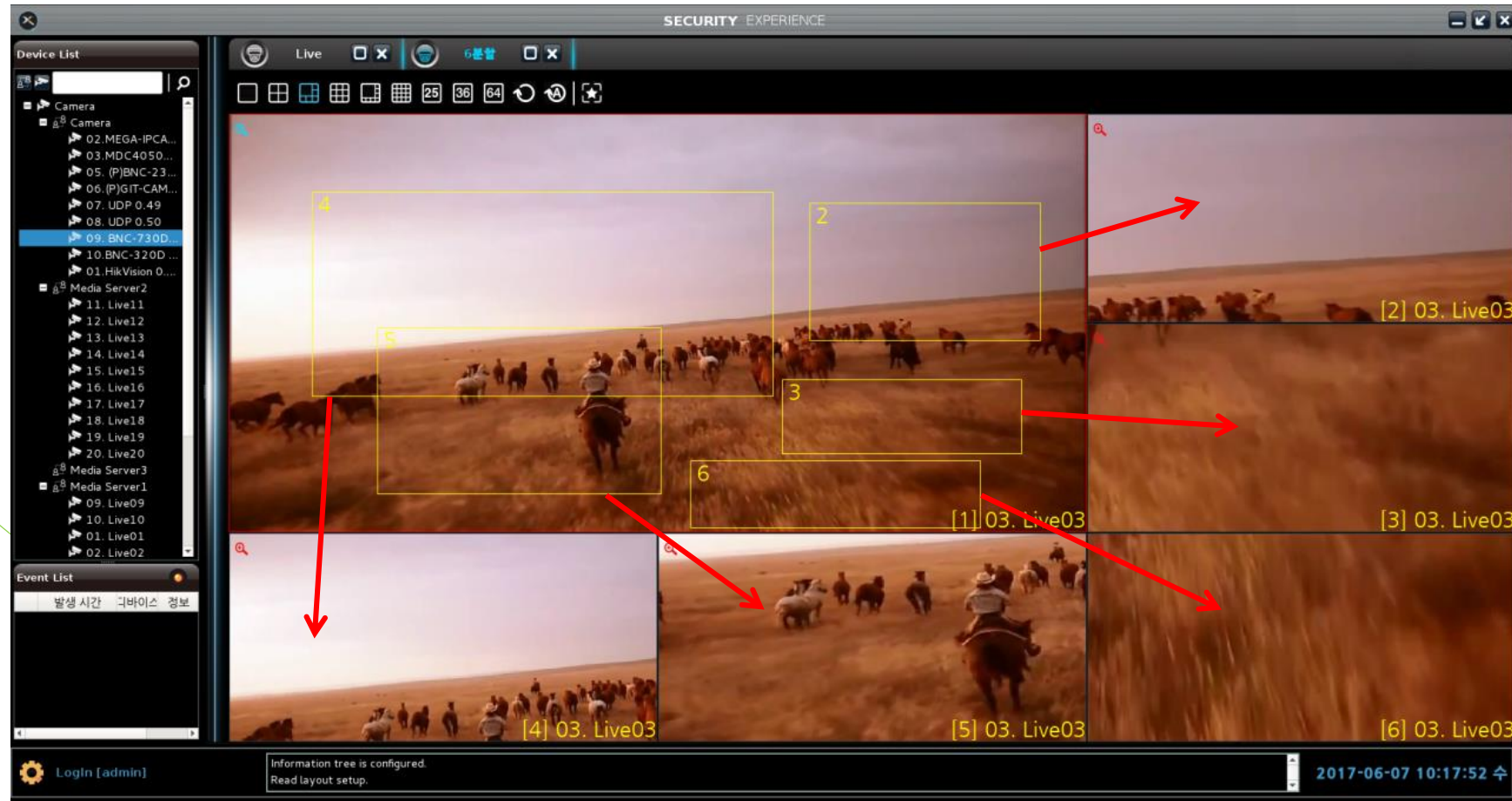
General/ Camera / User setup page



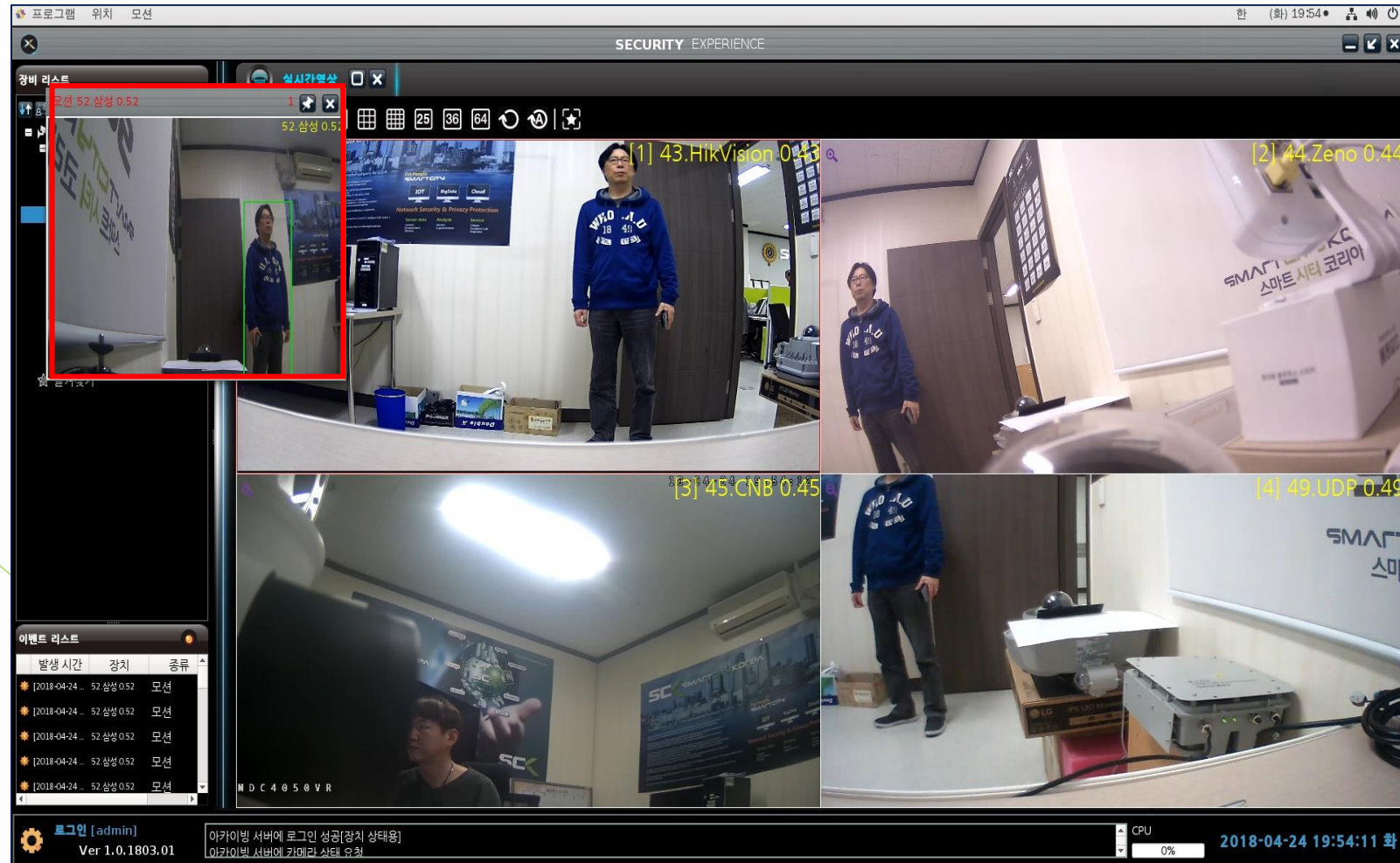
Web monitoring page for all status

01. SecuX VMS

SecuX VMS Client Viewer – Live image multi partial zone viewer function

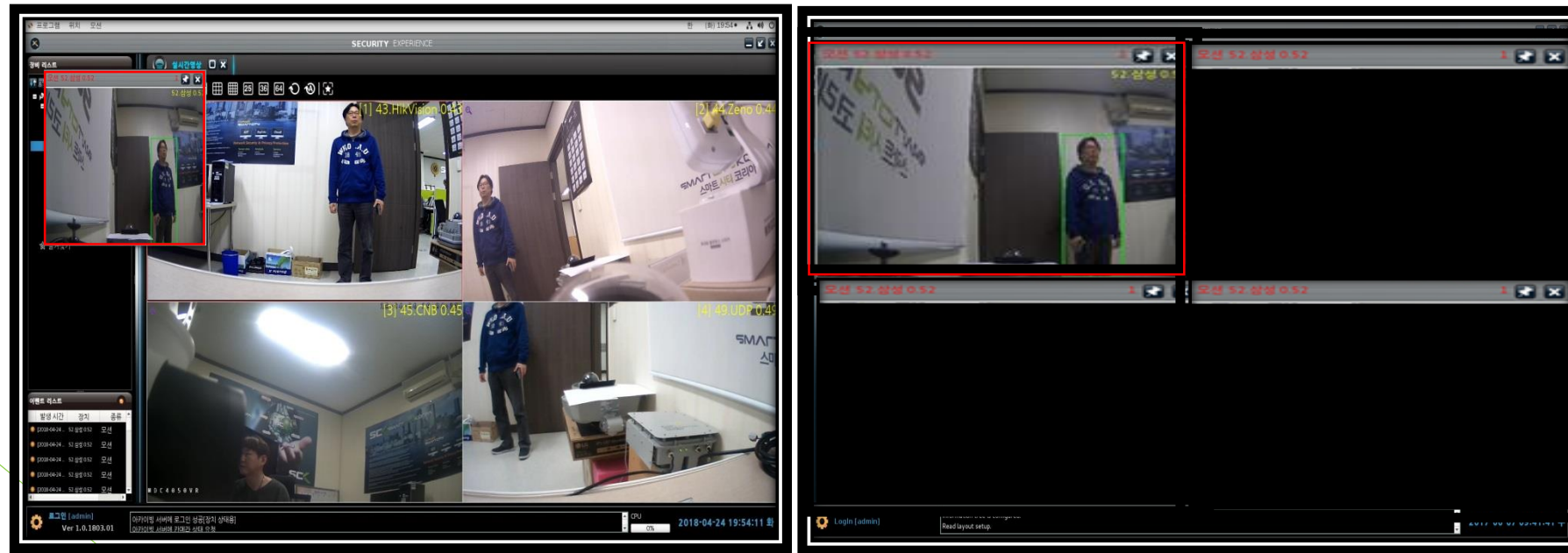


SecuX VMS Client Viewer — Event Pop-up with motion or VCA



01. SecuX VMS

SecuX VMS Client Viewer — Event pop-up with 2 monitors



Main Viewer Monitor 1

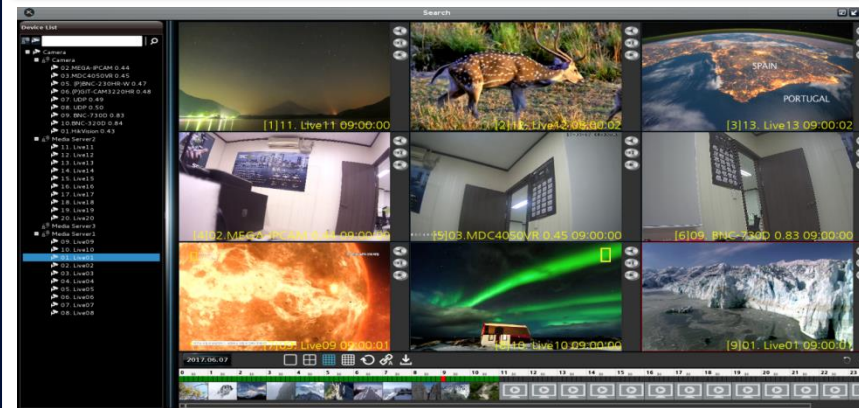
4ch Event Viewer Monitor 2

SecuX VMS Client Viewer – Search Playback special functions

The different cameras in different time zone



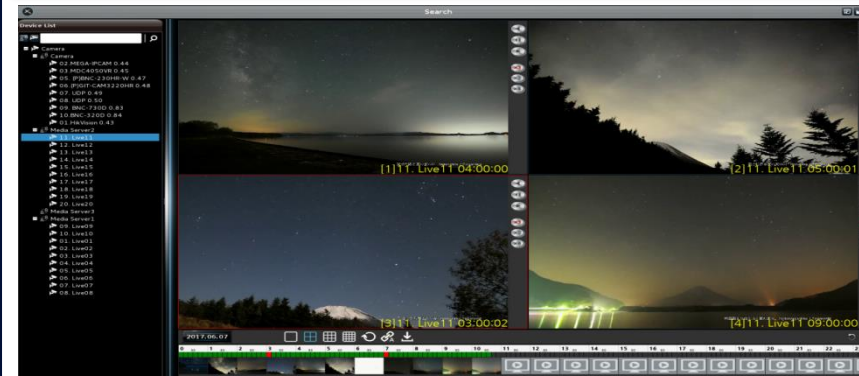
The different cameras in same time zone



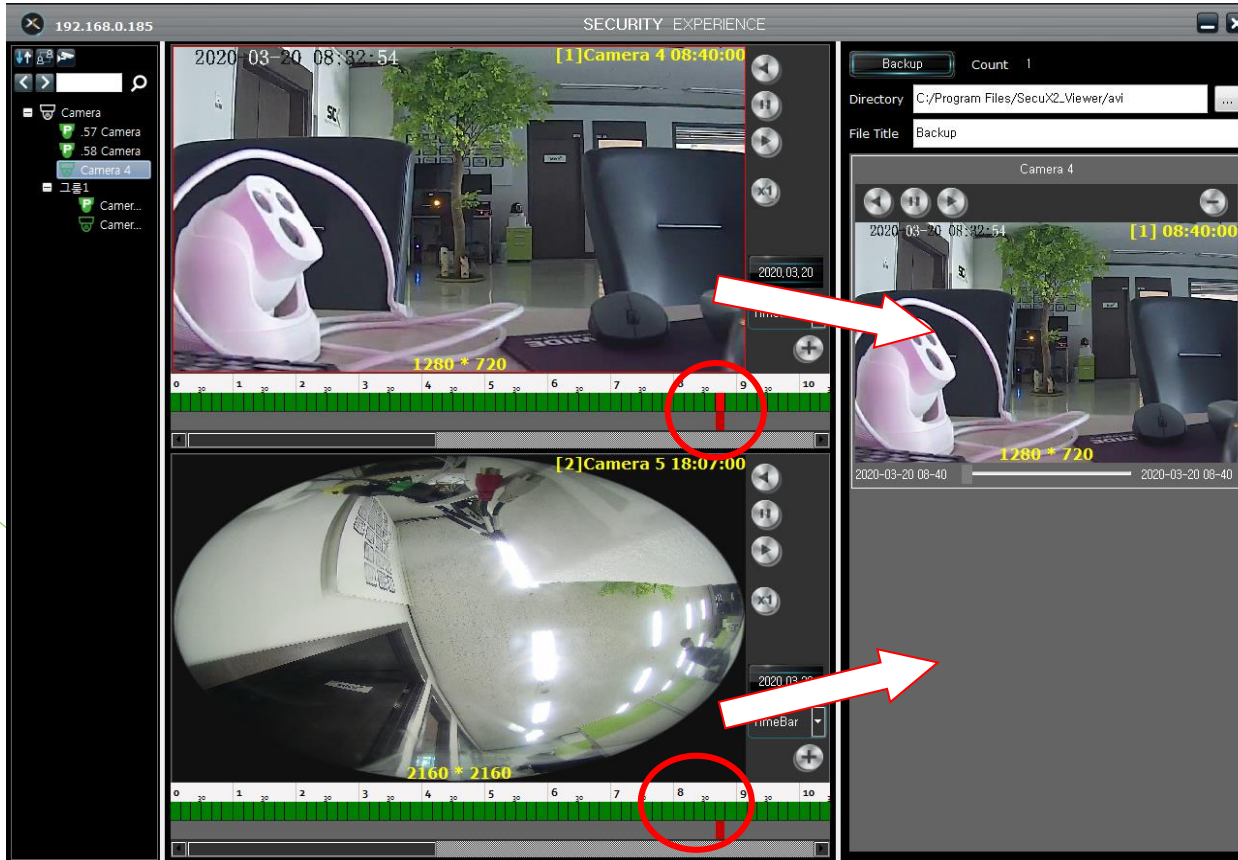
The Same camera in different time zone – 9 splits



The same camera in different time zone – 4 splits



SecuX VMS Client Viewer – Stitch Backup functions



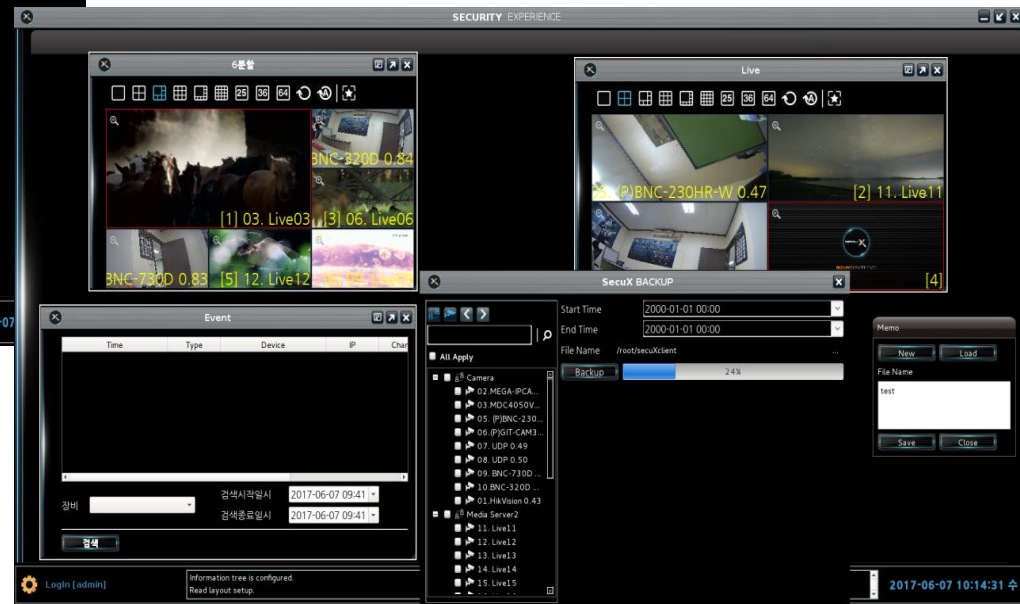
Multi channel recorded data backup with one file. Select certain cameras backup data and stitch them as a one backup file.

SecuX VMS Client Viewer – Dash board type multi viewers function

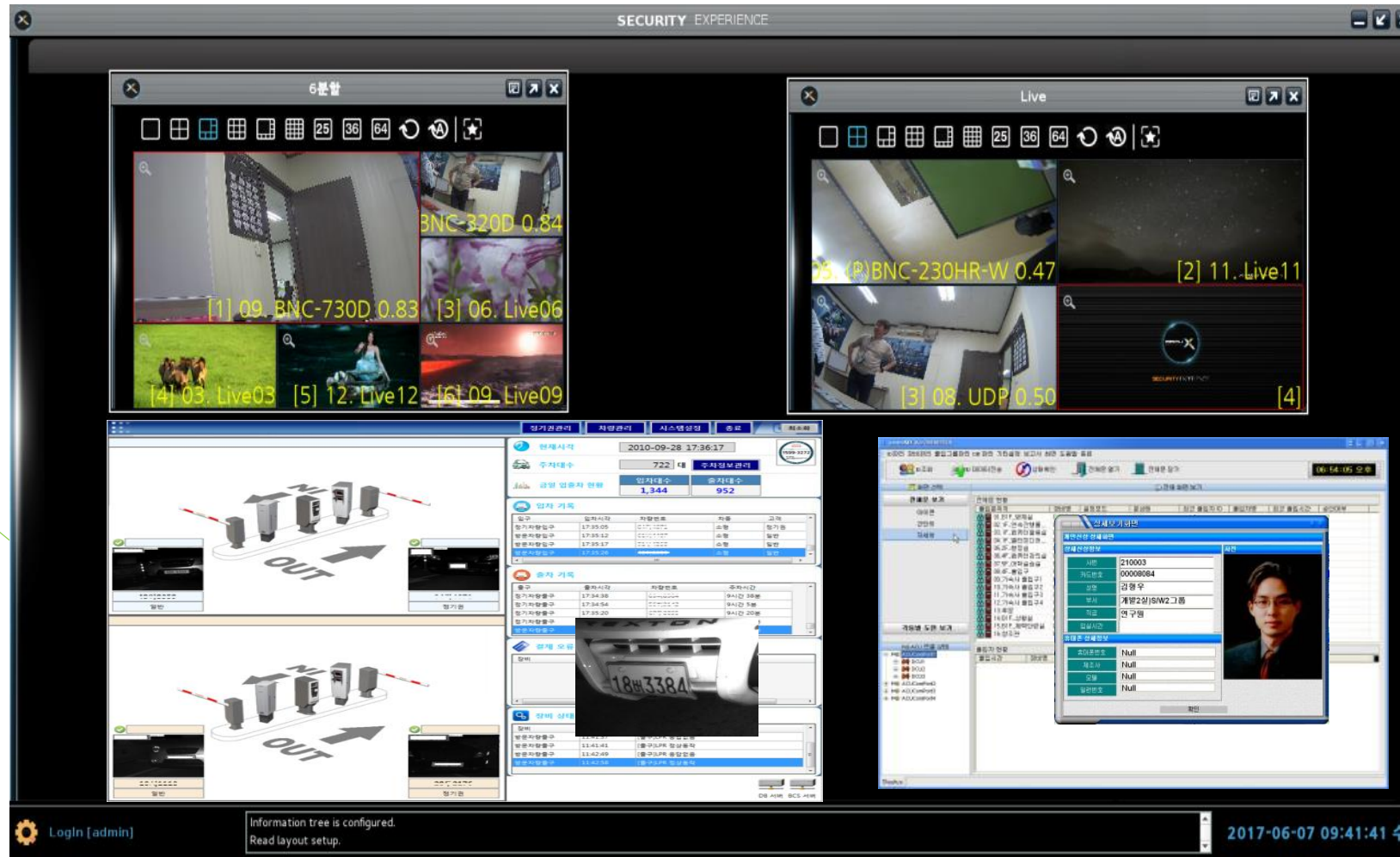


Open multi window and monitoring and control with one monitor. Using it like as total data dash board.

Multi floating window possible.
All windows can be re-sized freely to easy display.

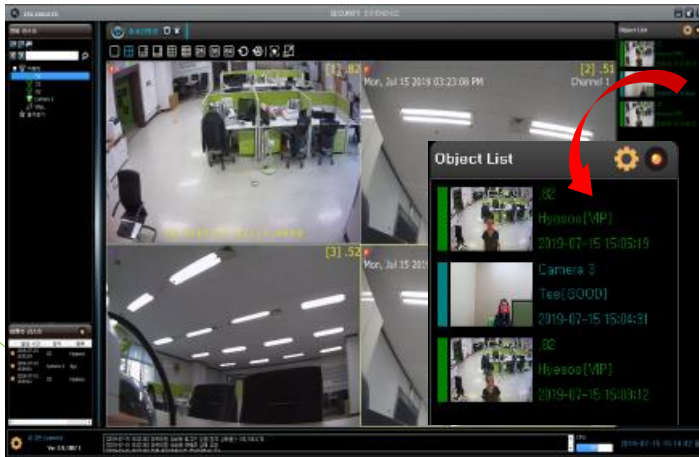


SecuX VMS Client Viewer – Dash board type multi viewers function



SecuX VMS Client Viewer – 3rd Engine integrated Viewer

Integrated 3rd Engines (FR/LPR/VA) – Applied the Object list and special search viewer supported



FR VIEWER



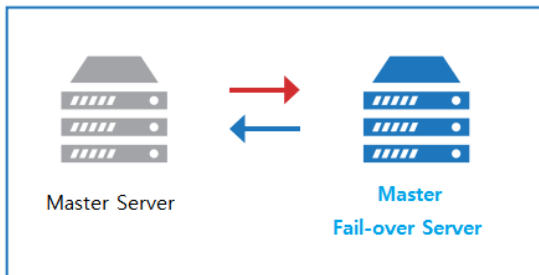
LPR VIEWER



VA VIEWER

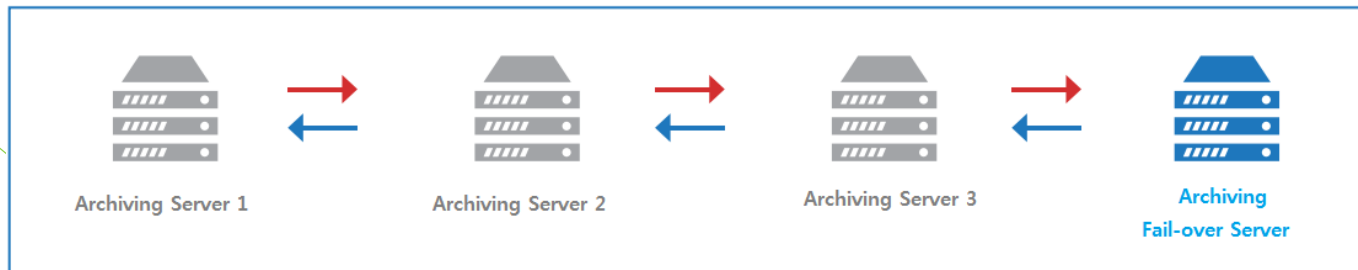
SecuX VMS System – Fail-over functions

Master Fail-over | It is the same as the master server program and includes a redundant function that can be switched over when a problem occurs on the master server.



- Only one master failover server is required regardless of the number of channels.
- It is composed 1:1 with the master server.

Archiving Fail-over | It is the same as the archiving server program and includes a redundant function that can be switched over when an archiving server problem occurs.



- Archiving Failover Server is based on the number of archiving servers. Regardless, only one can be used.
- It is composed of 1:1 or 1:N with the archiving server.

02

SecuX VMS E-map



02. SecuX E-map

SecuX E-map Main Features

VMS SecuX E-map Viewer

Responsible for security with flexible openness and strong 3rd integrated



CCTV Camera

Live monitoring / Location information on the map as an icon



Event Handling

Event Pop-up / Event List



Multi map Support

Multi-map registering / Link map support / Map Generator



IOT Sensor Integrated

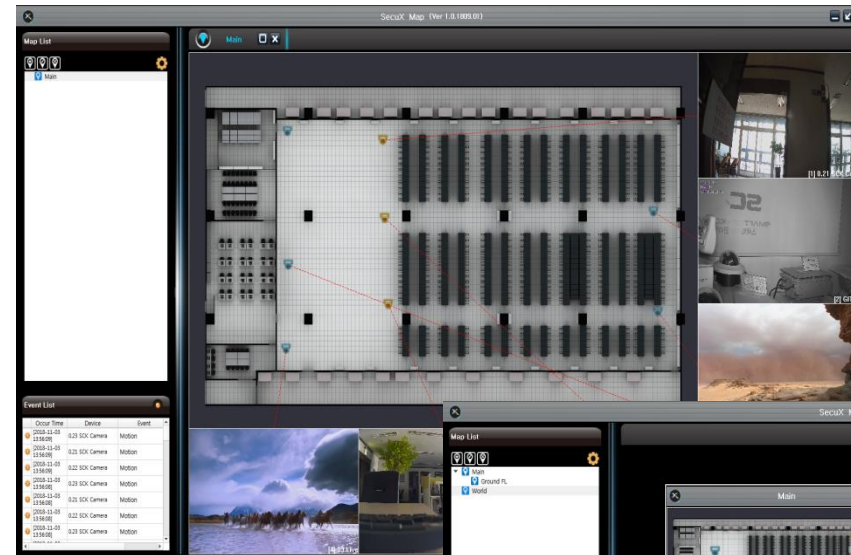
Sensor integrated / Fence Integrated



SecuX E-Map is an extra software with SecuX VMS to live monitor the connected IP cameras, and its status with E-map (png file). This software is integrated with SecuX VMS, and takes video and other information from the SecuX VMS. User needs to prepare for map images (png file) to use it. User can display camera icons on the map with map generation tool. Using this software, user can easily understand where the CCTV camera is, and what happen in there, because E-map shows the location of the cameras.

02. SecuX E-map

SecuX E-map Client Viewer



Multi floating window possible.
All windows can be re-sized freely to
easy display.



03

SecuX VMS - M



03. SecuX Mobile App.

SecuX Mobile App. Main Features

VMS SecuX Mobile App.



CCTV Camera

Live monitoring (1~4ch) / 1ch Search playback



PTZ Control

PTZ camera control on the 1ch viewer



Event Push Service

Alarm push service / Auto live camera open Link



SecuX-m is an mobile phone application used to CCTV camera live monitor and search the saved video from SecuX VMS and SecuX NVR. When various events occur, event alarms are received, the video can be immediately monitored and searched through a mobile phone, and PTZ cameras can be controlled.

03. SecuX Mobile

SecuX Mobile App.

VMS SecuX Mobile App.

Event Receive & Live & Search Viewer



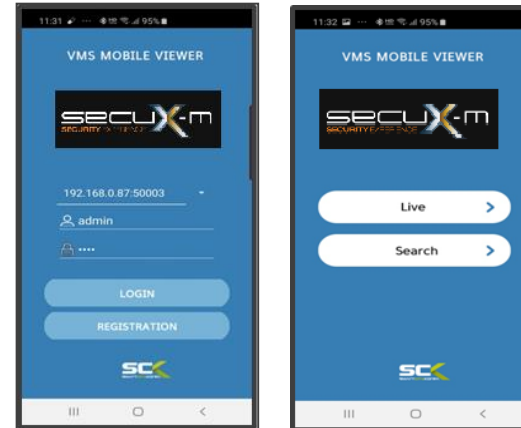
User can view up to 4 channels of Live video, easily change to a 1-channel viewer by touching the screen, and have a Quick Live camera selection function, and through the Alarm Push server, you can receive events and activate the video viewing window. User can search for saved video based on 1 channel.

PTZ Control



Pan / Tilt / Zoom control of PTZ camera live video in 1 channel is possible through On-Screen PTZ controller icons.

Log-in / Live & Search



Multi-site log-in through selecting IP
Selectable live & search function

Menu



1 channel live viewer & Camera list selection

04

SecuX VMS — Reference Site



SecuX VMS Major reference Sites



XX Special Forces Brigade(Airborne) Military Camp : Fence sensor/ In&Out side IP cameras 385ch



SK hynix Semiconductor factory In&Out side Security Cameras 624ch



Incheon Bridge Monitoring Cameras 84ch



20 elementary Schools in Jeollanamdo with 16ch NVR



Philippines Rosario City government CCTV Monitoring Center 102ch
XX Mall shopping center at Rockwell in Makati city 208ch
Ayala Group Condominium 3 towers Monitoring center 182ch

SecuX VMS Major reference Sites



KT Underground Utility Tunnel Monitoring Center : IP camera and Thermal Camera and Sensors



Green IT Korea Parking Management Place, and ITS site monitoring Center with LPR Cameras



Smart Street Lighting Camera Monitoring Center



XX Building Monitoring Center with Access Control System integration



Japan SECOM with 128/256 VMS with Mobile Viewer



32 Kindergartens in Siheung city with thermal cameras



Thank You.



SmartcityKorea Inc.



02-6959-4800



sales@smartcitykorea.com



<http://www.smartcitykorea.com>